

# Light efficiency:



# Light quality:



# Color temperature:



Output: 11346 lm

Peak: 18408 cd

Power: 399 W

PF: 1.0



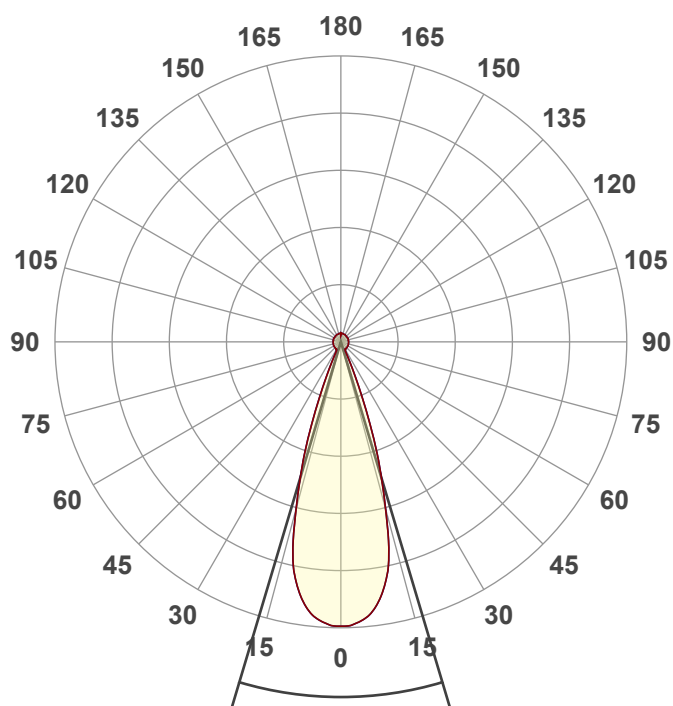
Product name:

**Hydro Flex L7 (Zoom Out Full on)**

Item number:

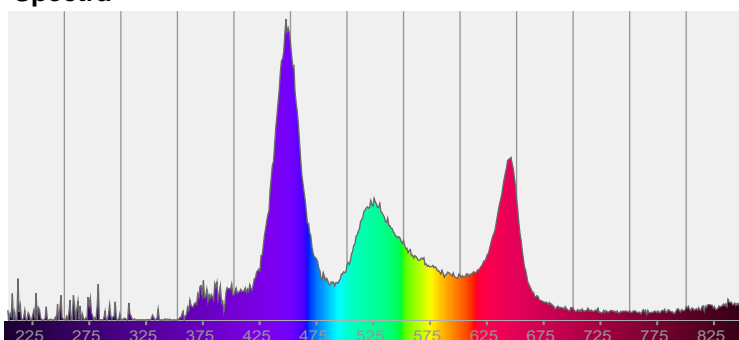
Date and time:

**8/26/2025 1:00:56 PM**

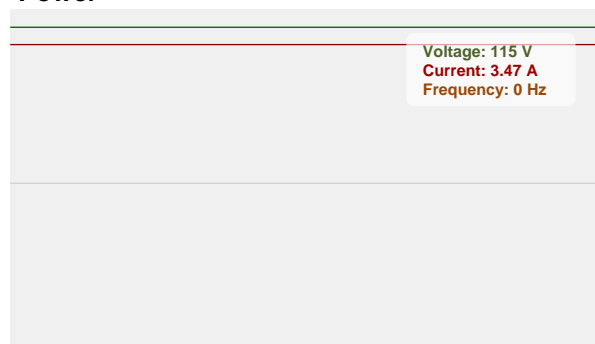


CIE 1931  
x: 0.268  
y: 0.248

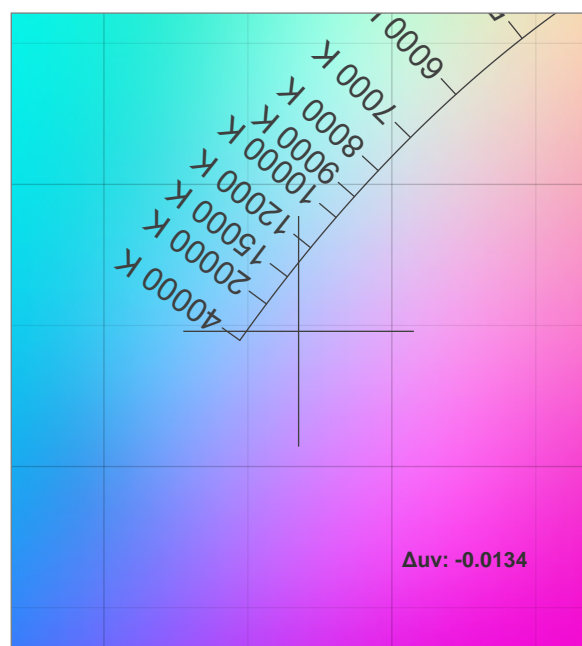
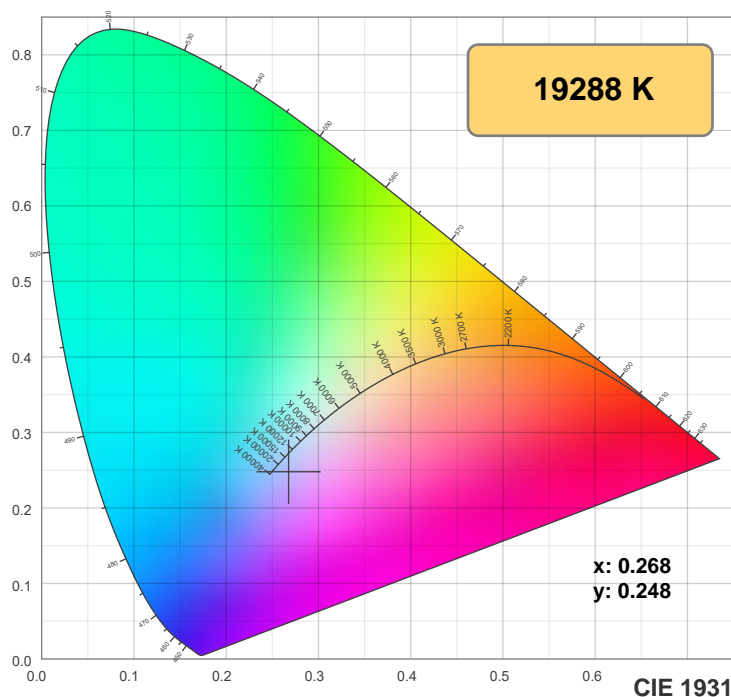
# Spectra



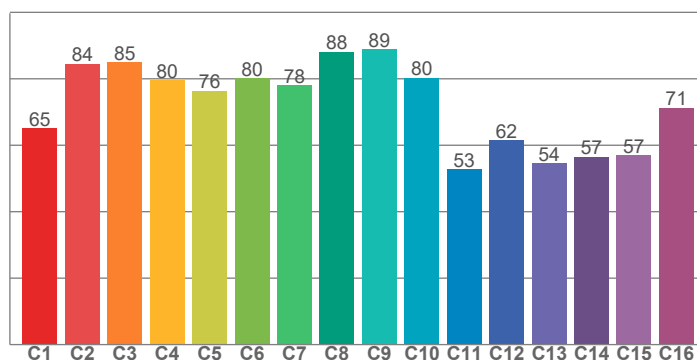
# Power



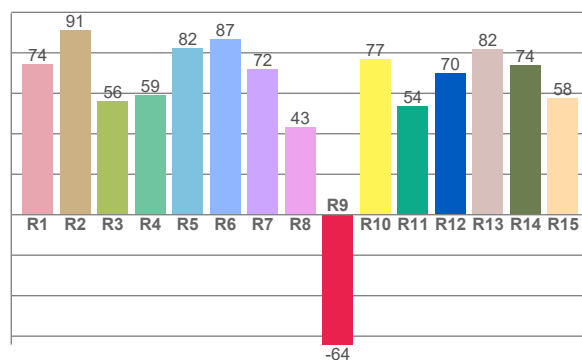
## Color details



**TM-30: 74.7**



**CRI: 70.6 (R1-R8)**



**CRI R values, only R1-R8 are used to calculate final CRI value**

R1	R2	R3	R4	R5	R6	R7	R8	R9	R10	R11	R12	R13	R14	R15
74.4	91.1	55.9	59.2	82.2	86.9	71.9	43.3	-64.2	76.7	53.6	69.9	81.9	73.8	57.5

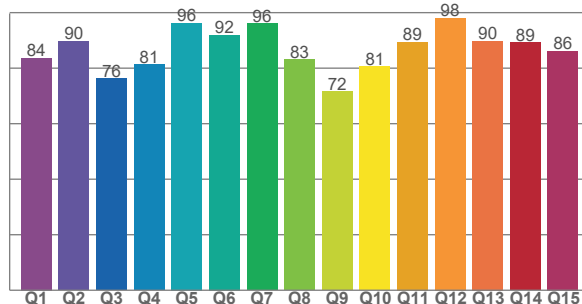
**TM30 C values, 16 binned values out of total of 99 C values**

C1	C2	C3	C4	C5	C6	C7	C8	C9	C10	C11	C12	C13	C14	C15	C16
65.1	84.5	84.9	79.5	76.4	80.1	78.1	88.1	88.8	80.3	52.8	61.5	54.5	56.5	56.9	71.2

**CQS Q values**

Q1	Q2	Q3	Q4	Q5	Q6	Q7	Q8	Q9	Q10	Q11	Q12	Q13	Q14	Q15
83.7	89.7	76.3	81.2	96.3	91.9	96.2	83.1	71.6	80.6	89.4	98.1	89.8	89.2	86.2

**CQS: 85.0**



### Color parameters

Color temperature	Color rendering index	Red component	Color fidelity	Color gamut	Color quality scale	Color coordinate cie 1931	Color coordinate cie 1931	Color coordinate	Color coordinate	Color deviation from black body
CCT	CRI	CRI R9	TM30 Rf	TM30 Rg	CQS	x	y	u	v	Δuv
19288 K	70.6	-64.2	74.7	116.4	85.0	0.268	0.248	0.197	0.273	-0.0134

# TM-30 details

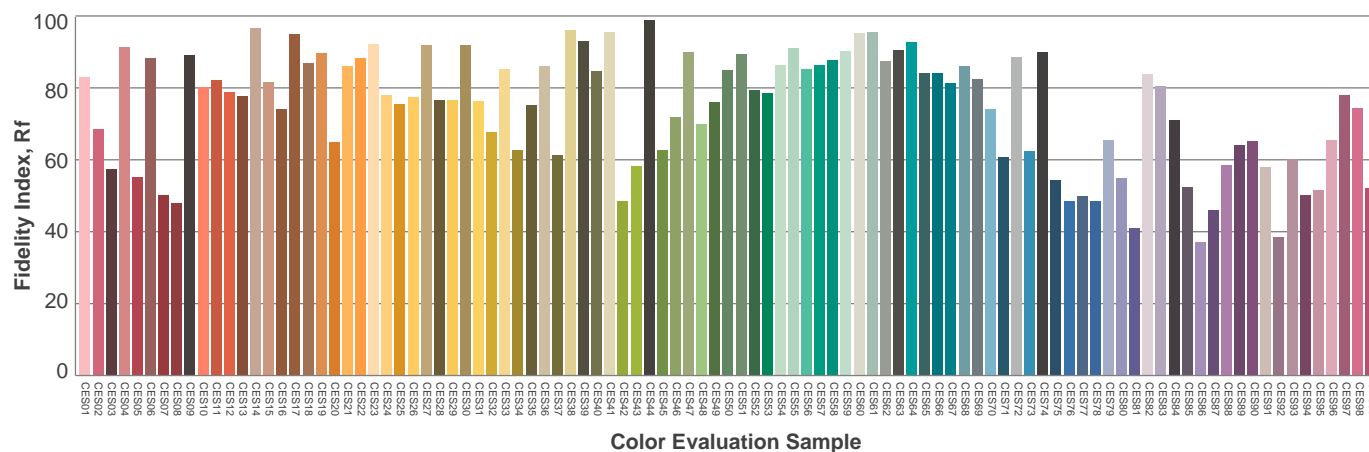
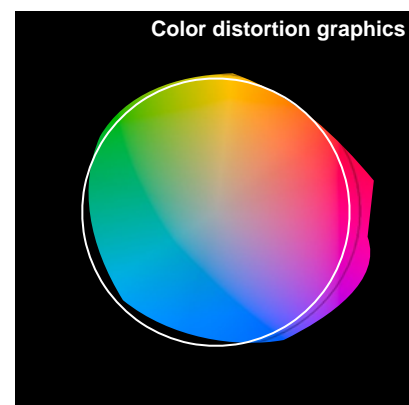
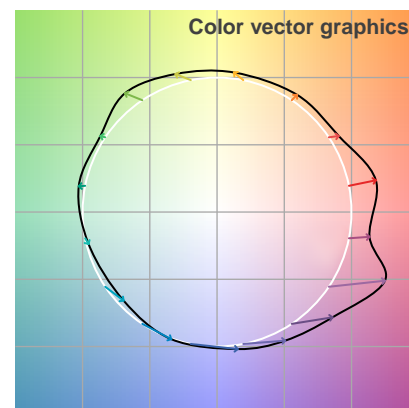
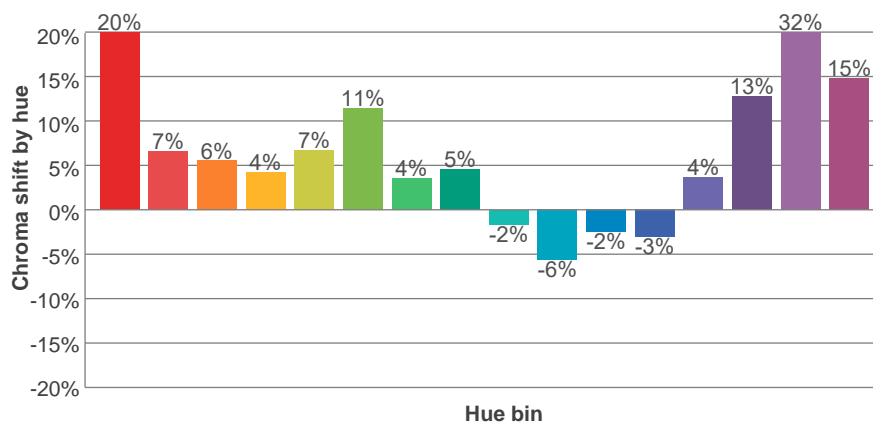
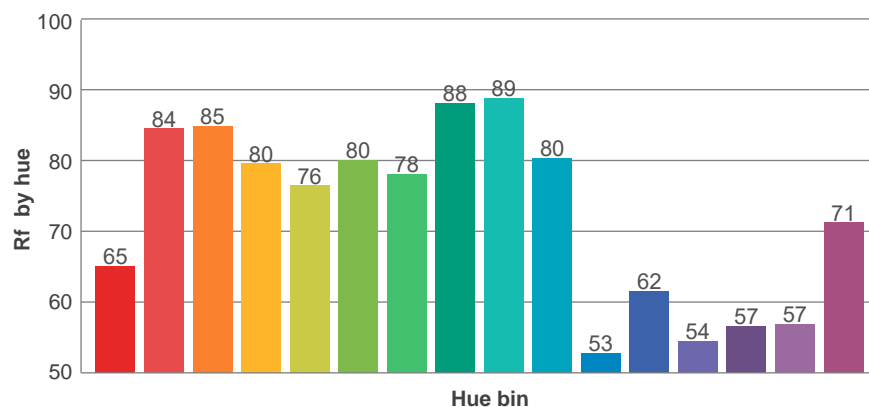
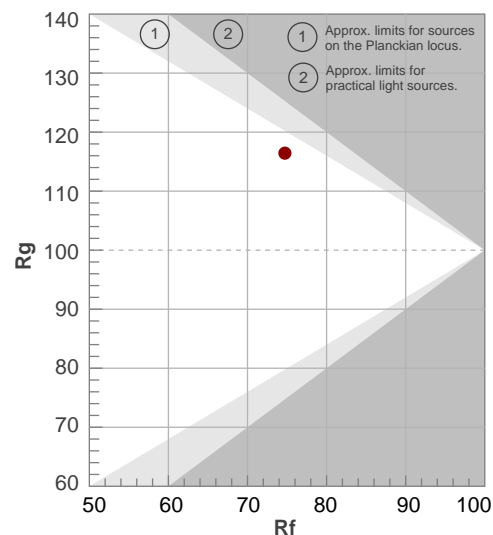
**Rf 74.7**

Fidelity index Rf

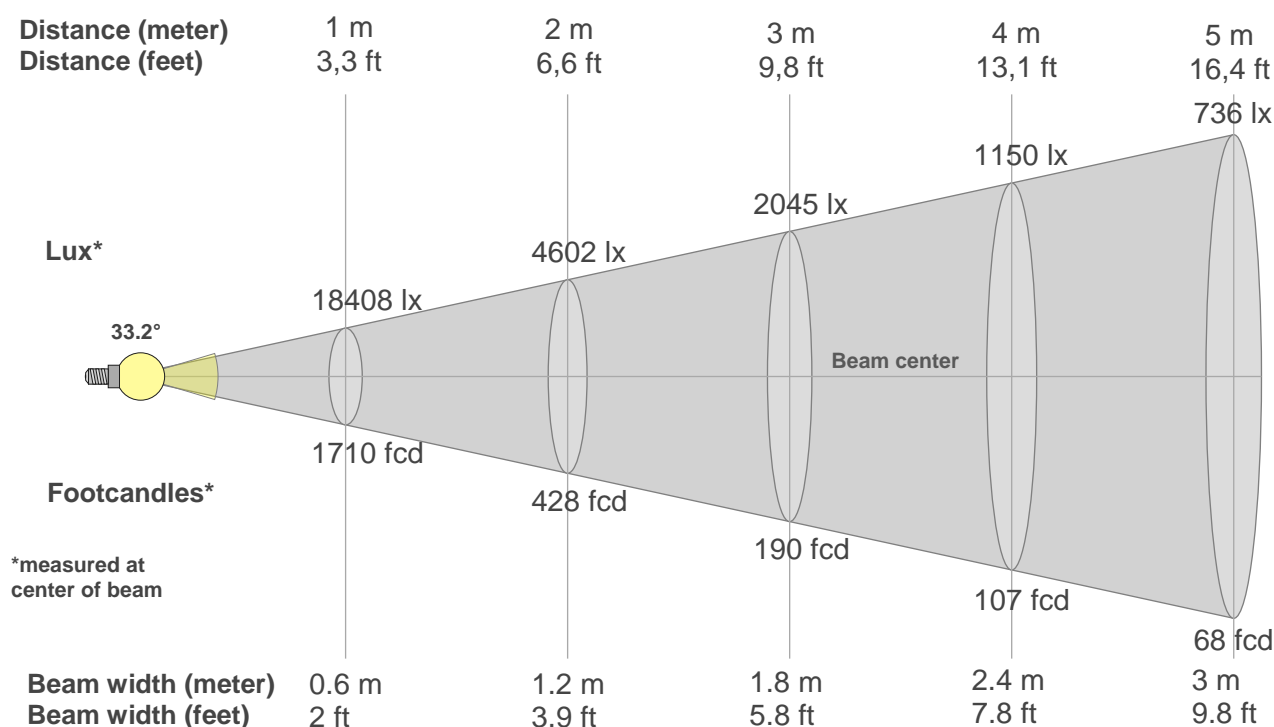
**Rg 116.4**

Gamut index Rg

Hue Bin	R <sub>f</sub>	Shifts (%)	
		Chroma	Hue
1	65	20%	0%
2	84	7%	-3%
3	85	6%	-1%
4	80	4%	8%
5	76	7%	10%
6	80	11%	8%
7	78	4%	1%
8	88	5%	1%
9	89	-2%	5%
10	80	-6%	16%
11	53	-2%	24%
12	62	-3%	35%
13	54	4%	31%
14	57	13%	28%
15	57	32%	27%
16	71	15%	4%



## Beam details



### Beam intensities from 1-20m

1m	2m	3m	4m	5m	6m	7m	8m	9m	10m	11m	12m	13m	14m	15m	16m	17m	18m	19m	20m
3.3ft	6.6ft	9.8ft	13.1ft	16.4ft	19.7ft	23ft	26.2ft	29.5ft	32.8ft	36.1ft	39.4ft	42.7ft	45.9ft	49.2ft	52.5ft	55.8ft	59.1ft	62.3ft	65.6ft
18408lx	4602lx	2045lx	1150lx	736lx	511lx	376lx	288lx	227lx	184lx	152lx	128lx	109lx	94lx	82lx	72lx	64lx	57lx	51lx	46lx
1710.1fcd	427.5fcd	190fcd	106.9fcd	68.4fcd	47.5fcd	34.9fcd	26.7fcd	21.1fcd	17.1fcd	14.1fcd	11.9fcd	10.1fcd	8.7fcd	7.6fcd	6.7fcd	5.9fcd	5.3fcd	4.7fcd	4.3fcd

### Intensities in 0° c-plane

0°	2°	4°	6°	8°	10°	12°	14°	16°	18°	20°	22°	24°	26°	28°	30°	32°	34°	36°	38°
18.4k	18.4k	18.1k	17.8k	17.1k	16.1k	14.8k	12.5k	9.9k	7.6k	5.1k	2.9k	1.4k	0.7k	0.6k	0.6k	0.5k	0.6k	0.5k	0.5k
100%	100%	99%	97%	93%	88%	80%	68%	54%	41%	28%	16%	8%	4%	3%	3%	3%	3%	3%	3%

### Intensities in 90° c-plane

0°	2°	4°	6°	8°	10°	12°	14°	16°	18°	20°	22°	24°	26°	28°	30°	32°	34°	36°	38°
18.4k	18.4k	18.1k	17.8k	17.1k	16.1k	14.8k	12.5k	9.9k	7.6k	5.1k	2.9k	1.4k	0.7k	0.6k	0.6k	0.5k	0.6k	0.5k	0.5k
100%	100%	99%	97%	93%	88%	80%	68%	54%	41%	28%	16%	8%	4%	3%	3%	3%	3%	3%	3%

### Intensities in 180° c-plane

0°	2°	4°	6°	8°	10°	12°	14°	16°	18°	20°	22°	24°	26°	28°	30°	32°	34°	36°	38°
18.4k	18.4k	18.1k	17.8k	17.1k	16.1k	14.8k	12.5k	9.9k	7.6k	5.1k	2.9k	1.4k	0.7k	0.6k	0.6k	0.5k	0.6k	0.5k	0.5k
100%	100%	99%	97%	93%	88%	80%	68%	54%	41%	28%	16%	8%	4%	3%	3%	3%	3%	3%	3%

### Intensities in 270° c-plane

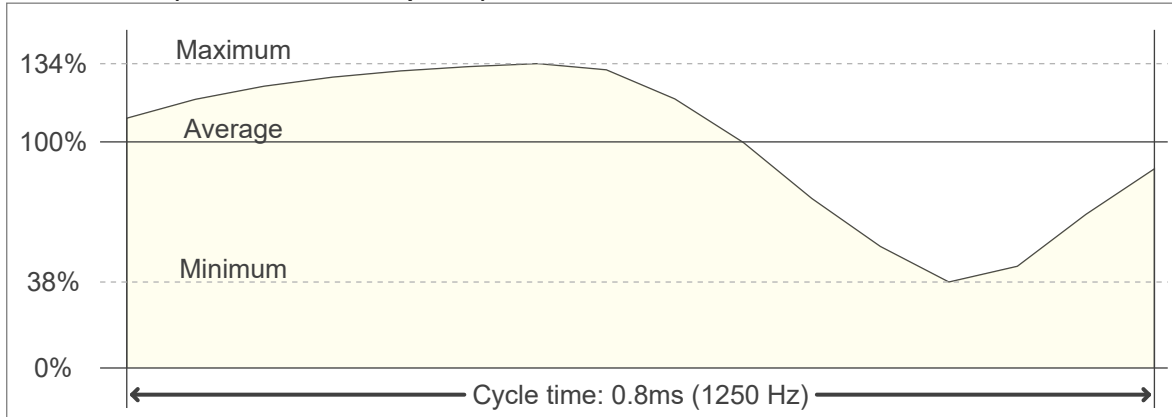
0°	2°	4°	6°	8°	10°	12°	14°	16°	18°	20°	22°	24°	26°	28°	30°	32°	34°	36°	38°
18.4k	18.4k	18.1k	17.8k	17.1k	16.1k	14.8k	12.5k	9.9k	7.6k	5.1k	2.9k	1.4k	0.7k	0.6k	0.6k	0.5k	0.6k	0.5k	0.5k
100%	100%	99%	97%	93%	88%	80%	68%	54%	41%	28%	16%	8%	4%	3%	3%	3%	3%	3%	3%

Beam angle 50%	Field angle 10%	Cutoff angle 2,5%	Intensity ratio in 120° cone	Intensity ratio in 90° cone
33.2°	46.8°	360°	57.8%	51.8%

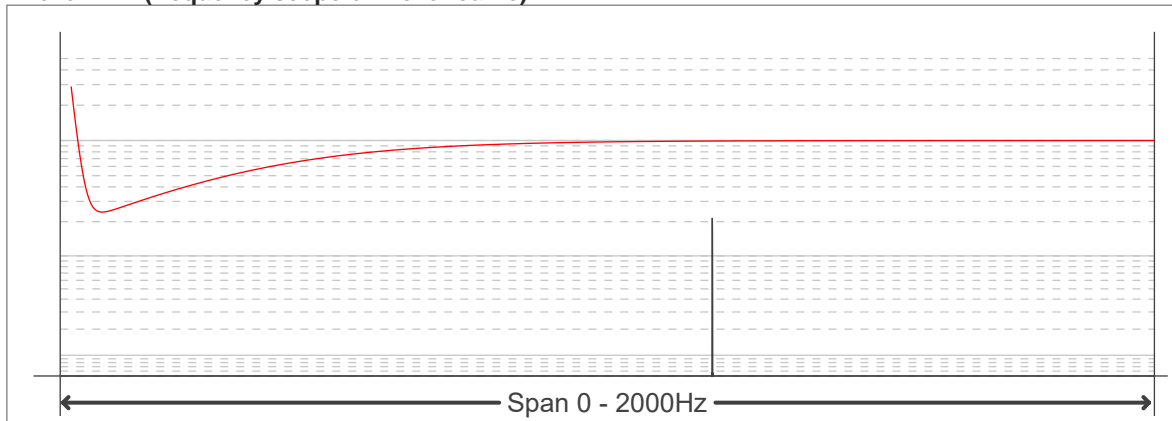
**Flicker curve (complete sampled flicker signal)**



**Flicker frame (frame of one flicker period)**



**Flicker FFT (frequency scope of flicker curve)**



**Flicker results:**

Flicker frequency:		1250 Hz	
Flicker index:	0.15	JA8/10 40Hz	0.17 %
Flicker percentage:	58.57 %	JA8/10 90Hz	0.28 %
SVM: (Visual flicker)	0.44	JA8/10 200Hz	0.53 %
PstLM	0	JA8/10 400Hz	1.14 %
Mp	0.1	JA8/10 1000Hz	5.57 %

**Flicker conditions:**

Sample rate:	20000 samples/second
--------------	----------------------